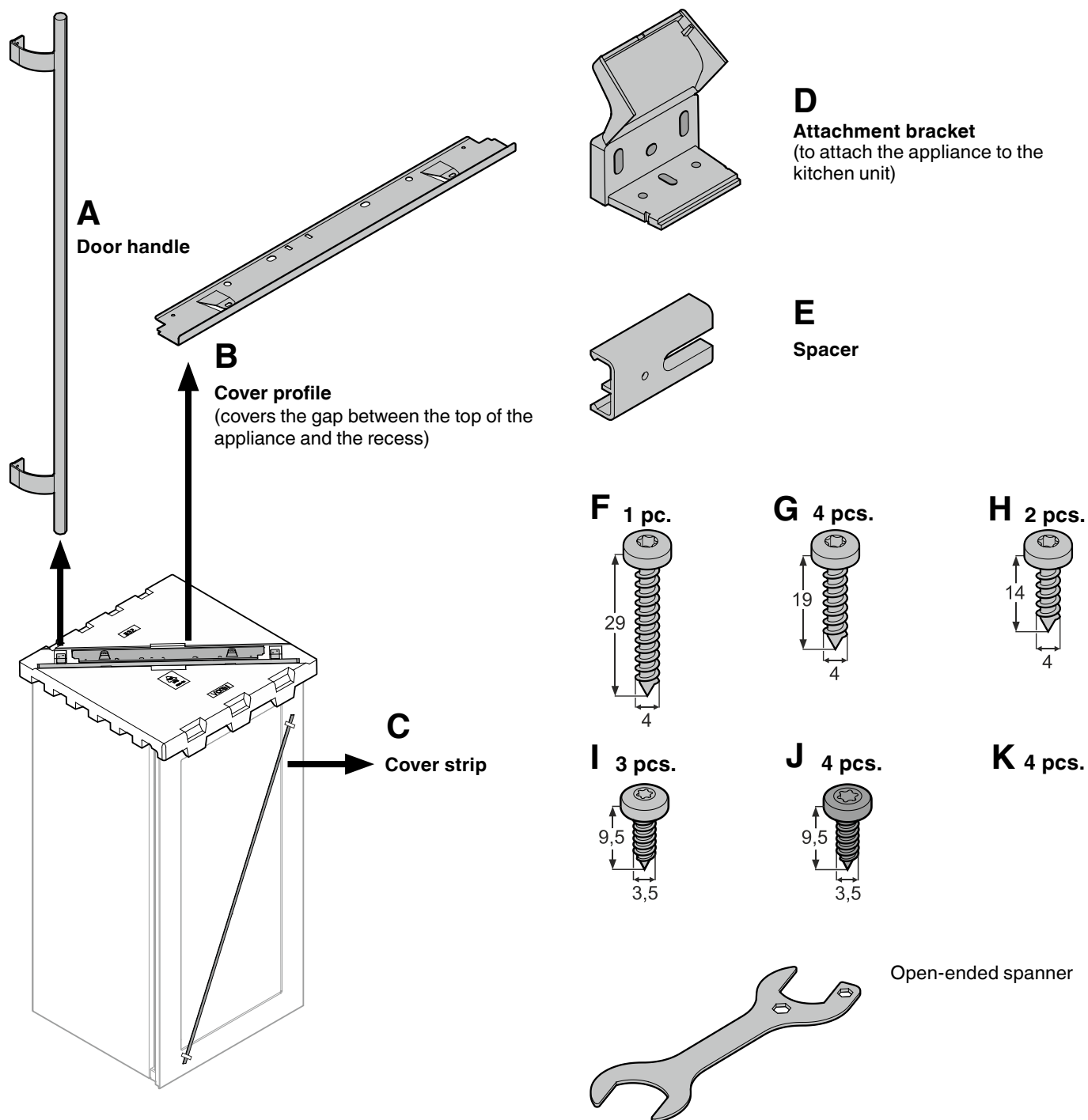


7084 175-00

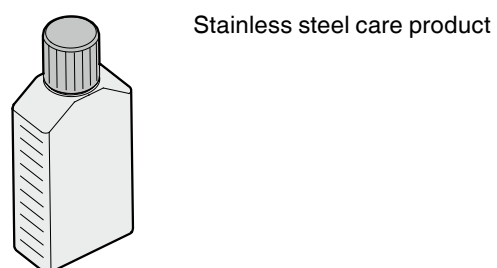
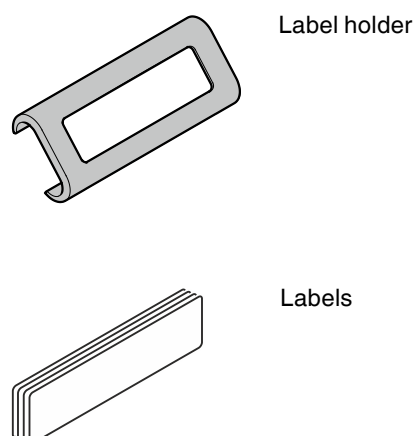
WTE 2053



Scope of delivery

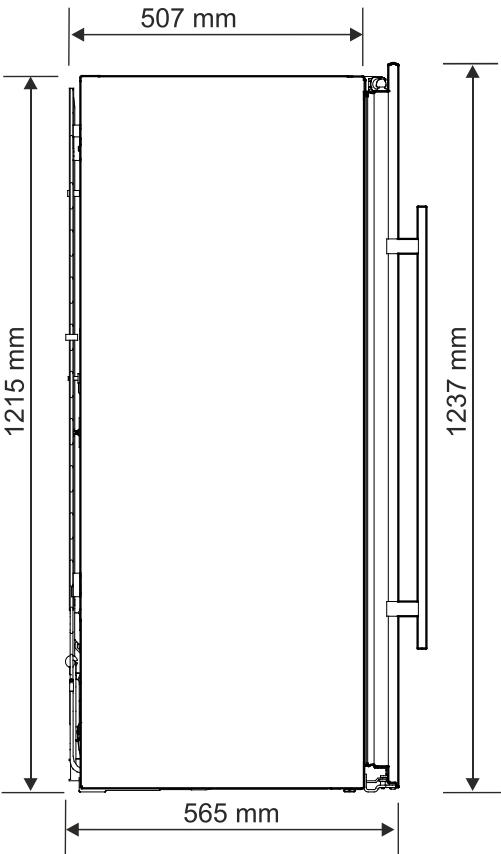


Supplied accessories

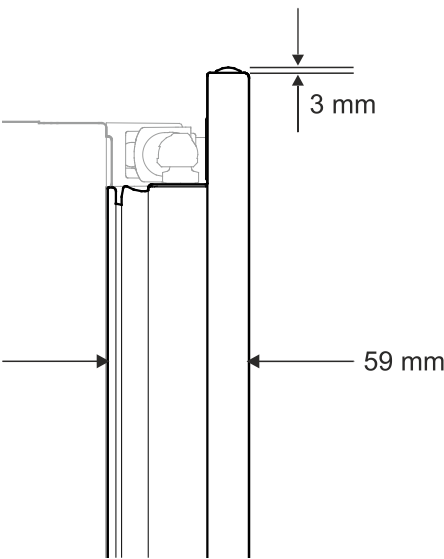


Appliance dimensions

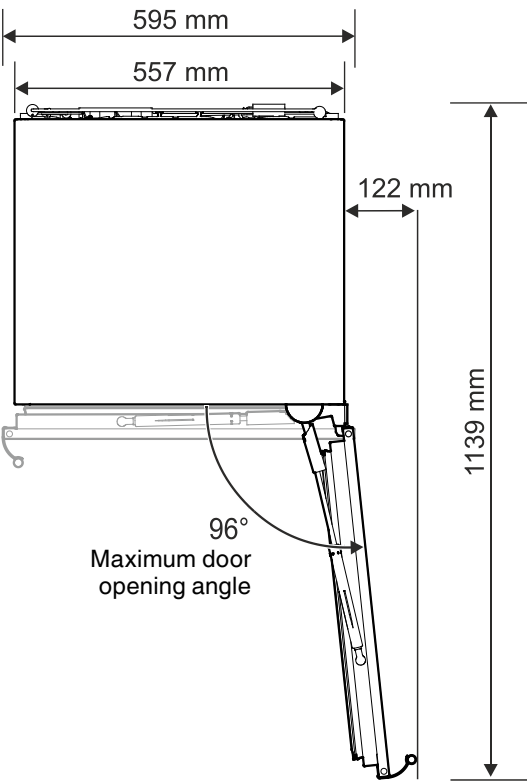
Side view



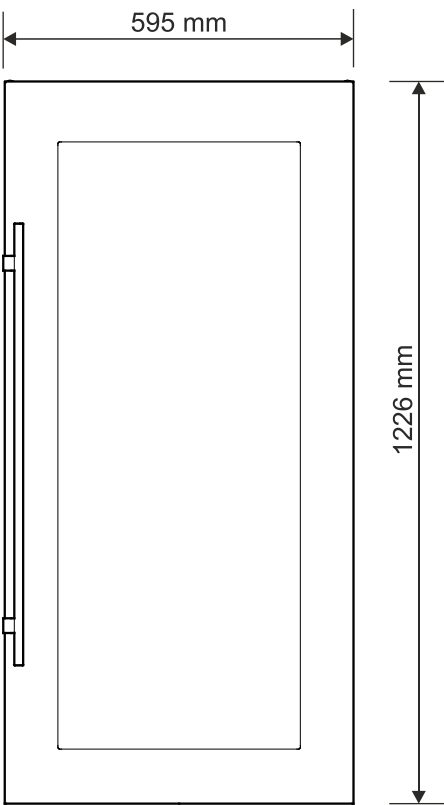
Side view of door



View from above



Front view of door



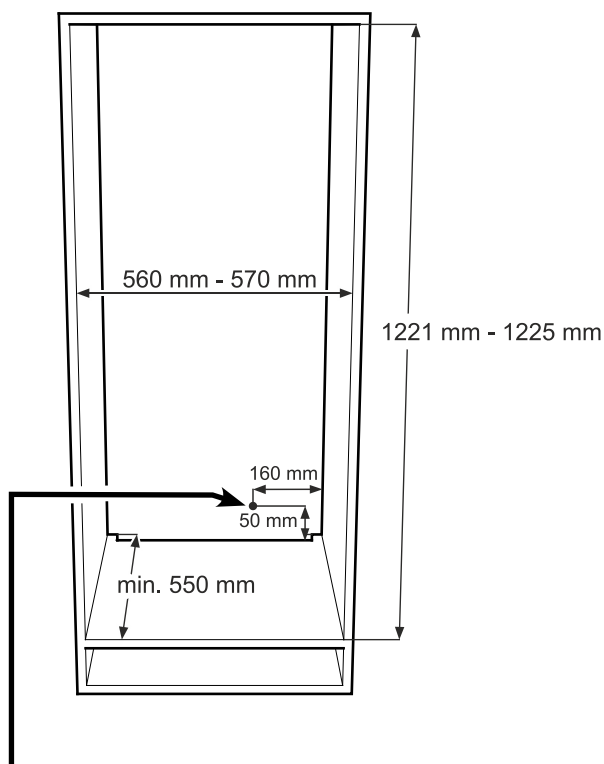
Installation dimensions

Important

In order to avoid any problems when installing the appliance and to avoid damage to the appliance, the following conditions must be complied with.

The kitchen unit must be aligned horizontally and vertically.

Minimum wall thickness of the body of the unit = 16 mm.



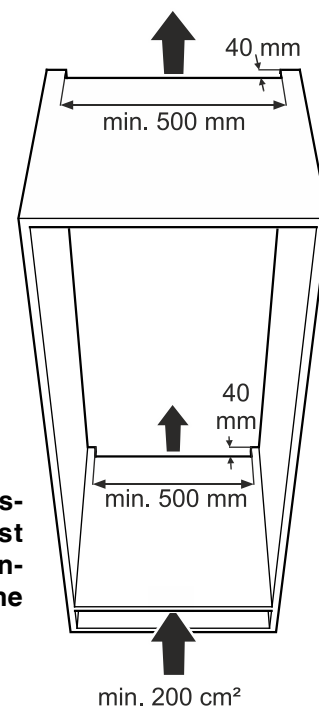
In this area, the power cord comes out of the appliance rear.

Free length of the power cord = **2000 mm**

Choose the position of the socket considering these specifications.

The socket must not be situated behind the appliance and must be easily accessible.

Appliance venting

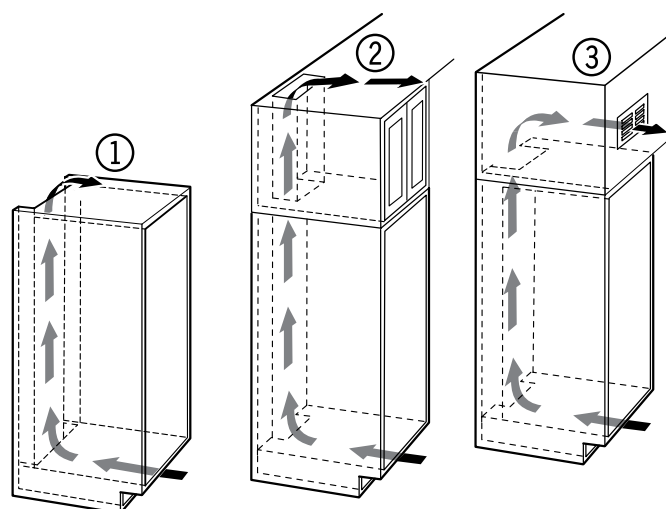


Important

The clear ventilation cross-section must be at least 200 cm² from the lower ventilation opening right to the upper one.

Types of air outlet

- ① Directly above the appliance
- ② Above the top unit
- ③ From the front of the top unit with decor grille



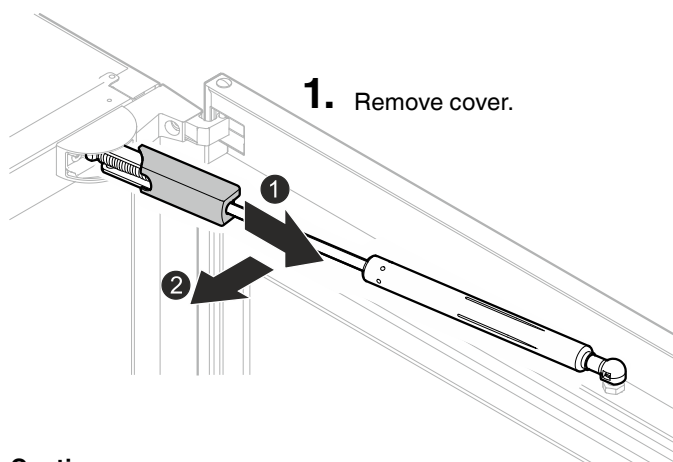
Important

When using decor grilles, it must be taken into account that the clear ventilation cross-section corresponds to the sum of the individual openings in the grille.

A cut-out section of merely 200 cm² for installing the ventilation grille is thus not sufficient.

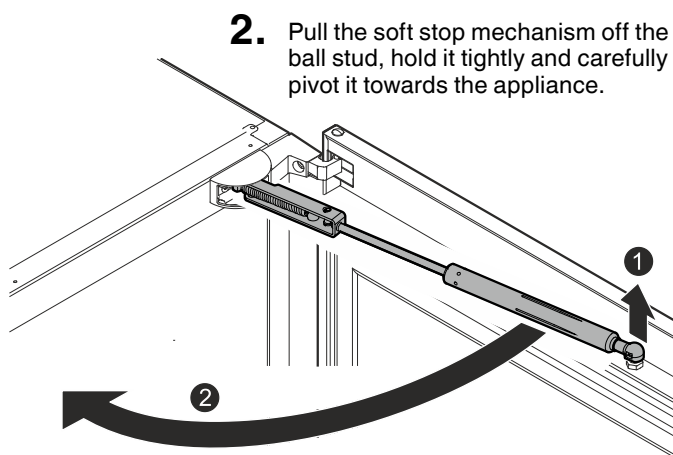
Changing over door hinges

Door hinges should only be changed by a trained expert.
Changing the door hinges must be done by two people.

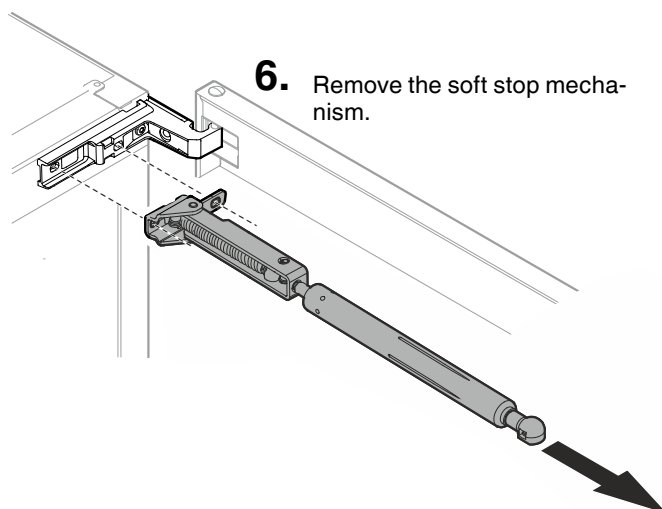
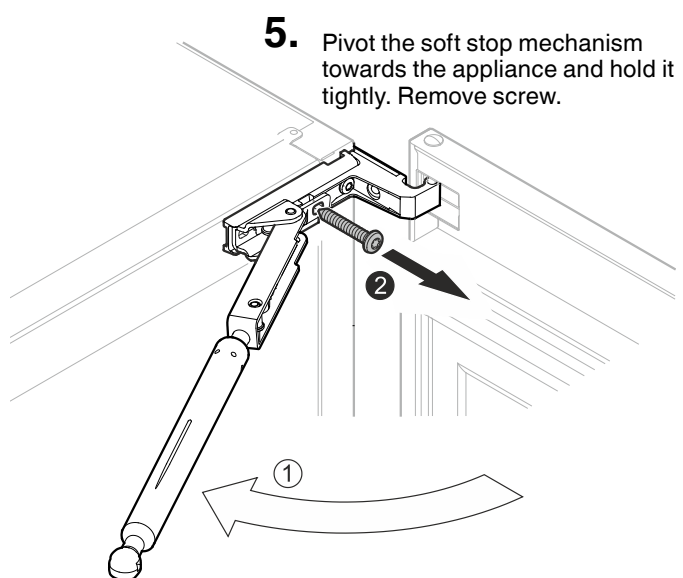
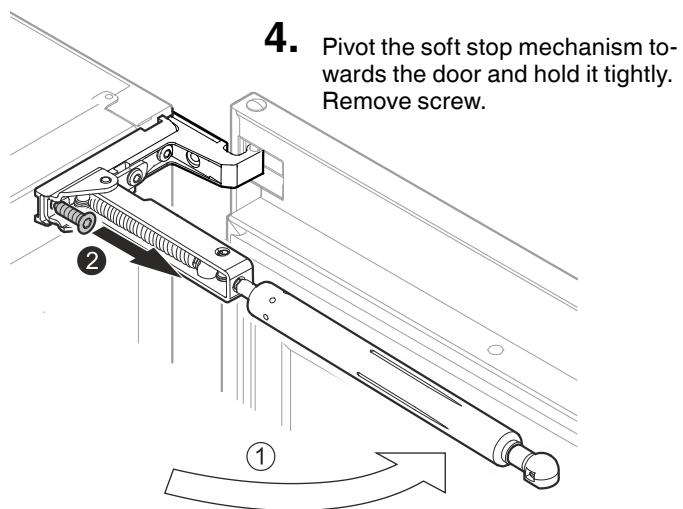
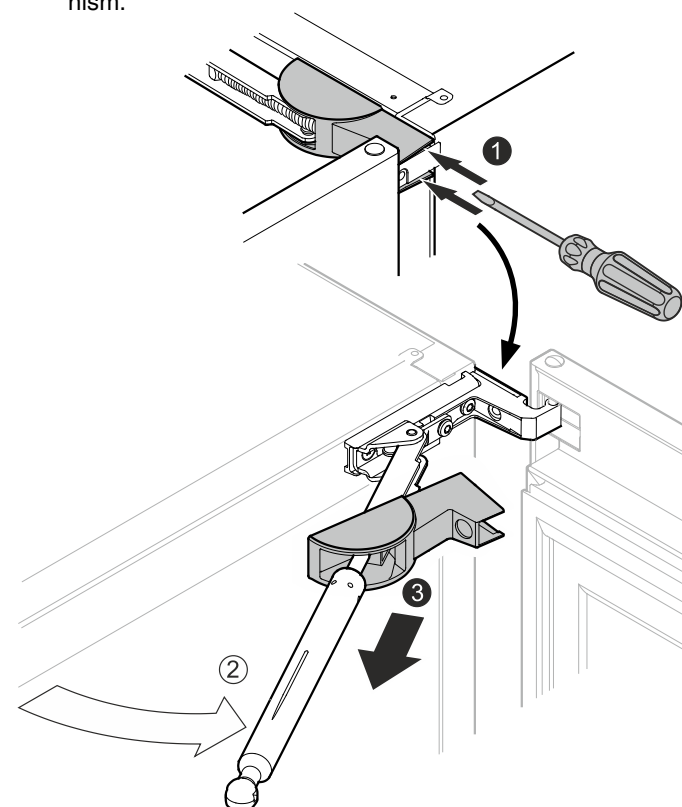


Caution

The soft stop mechanism spring is tensioned!

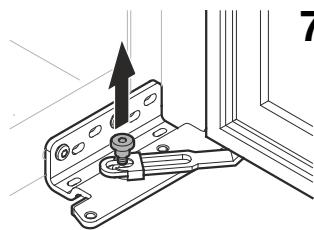


3. Carefully lever out the cover from the rear using a screwdriver and remove it over the soft stop mechanism.

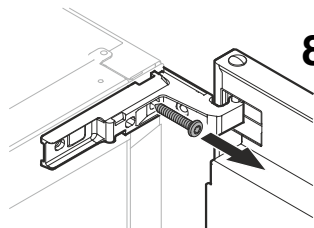


Important

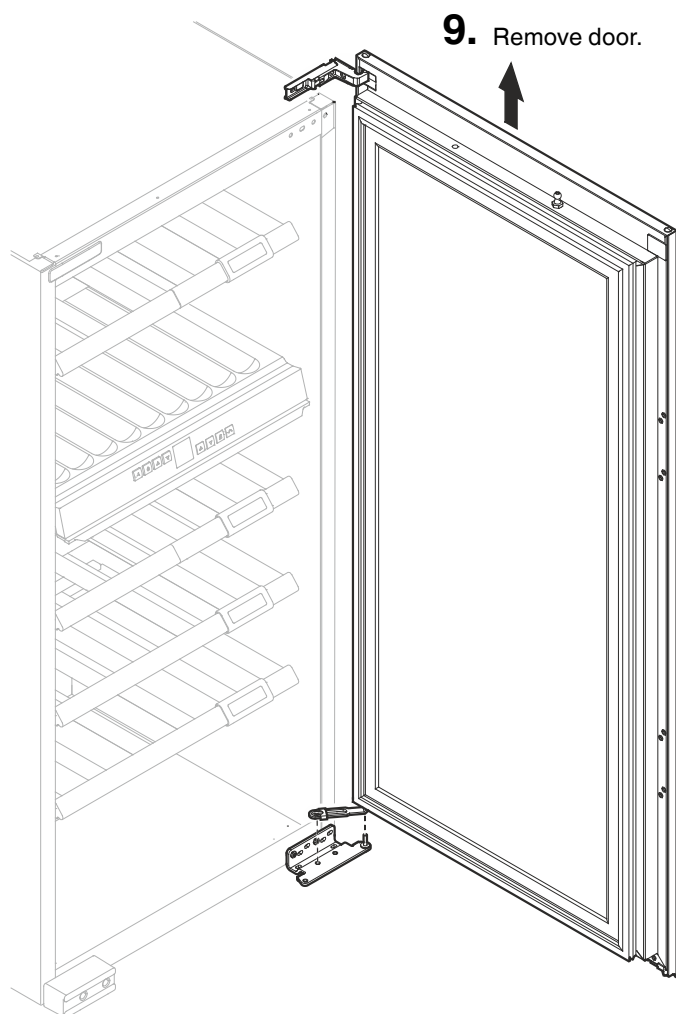
The door must now be held secure by somebody.



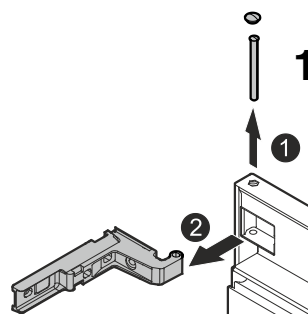
- 7.** Undo the screw on the bottom hinge bracket.



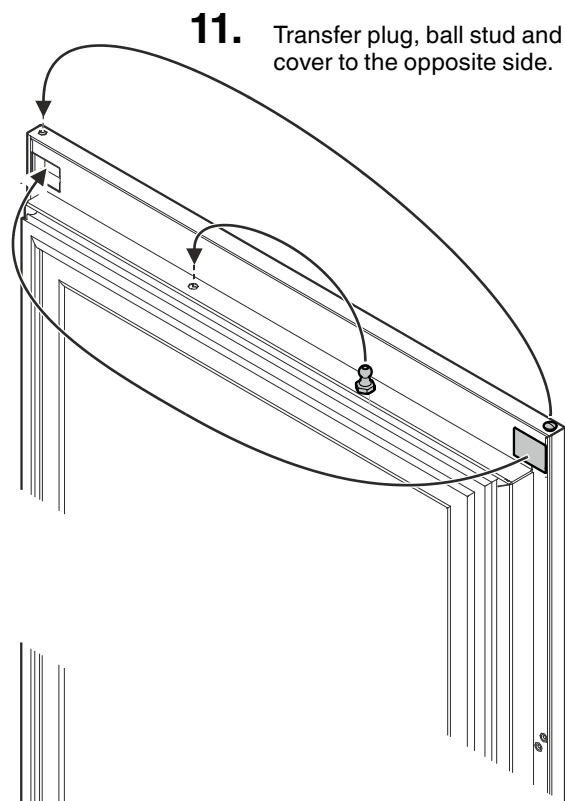
- 8.** Undo the screw on the top hinge bracket.



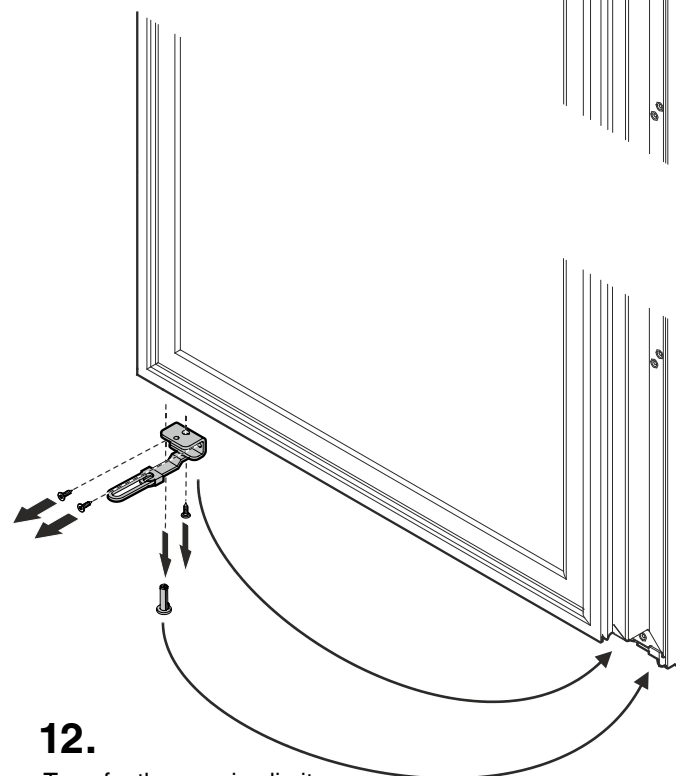
- 9.** Remove door.



- 10.** Pull out the plug and hinge pin and remove them with the hinge bracket.



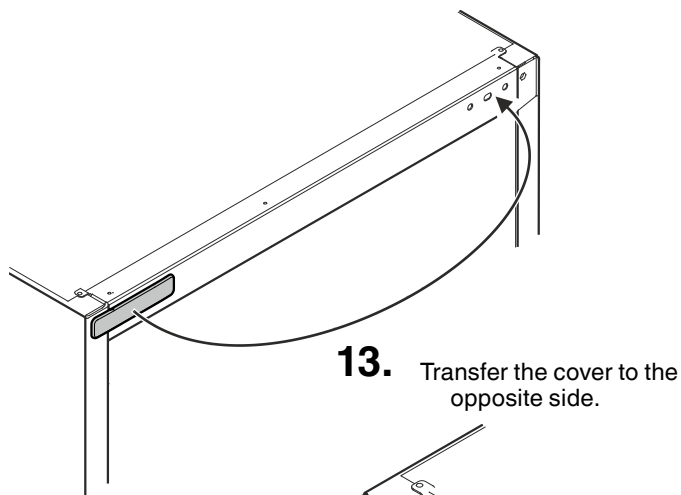
- 11.** Transfer plug, ball stud and cover to the opposite side.



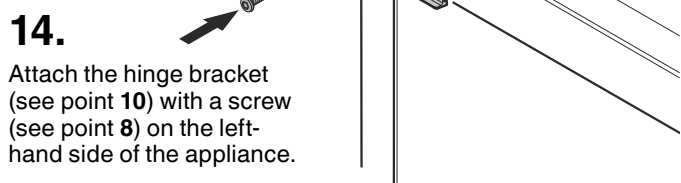
- 12.** Transfer the opening limiter and plastic sleeve to the opposite side.

Note

If the door handle has already been fitted, it must also be transferred to the other side, see section entitled "Installing the appliance", point 8.



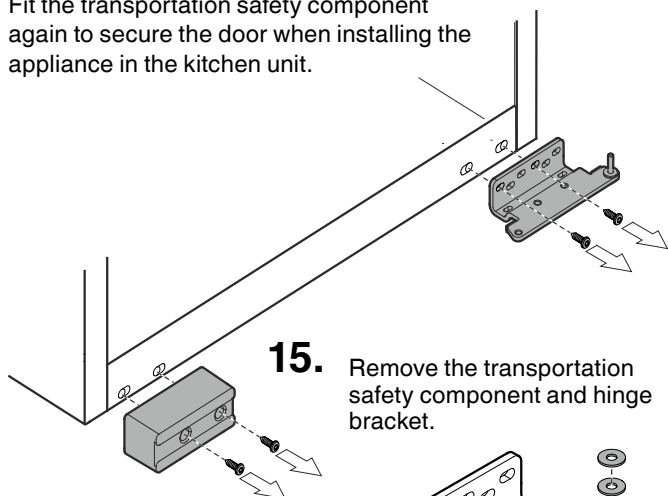
13. Transfer the cover to the opposite side.



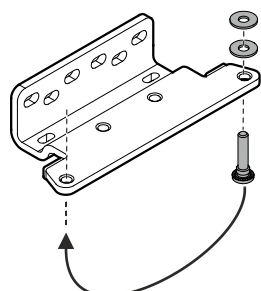
14. Attach the hinge bracket (see point 10) with a screw (see point 8) on the left-hand side of the appliance.

Important

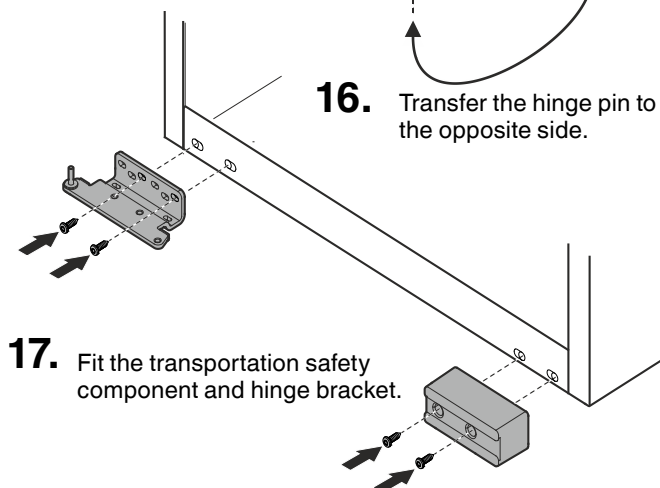
Fit the transportation safety component again to secure the door when installing the appliance in the kitchen unit.



15. Remove the transportation safety component and hinge bracket.

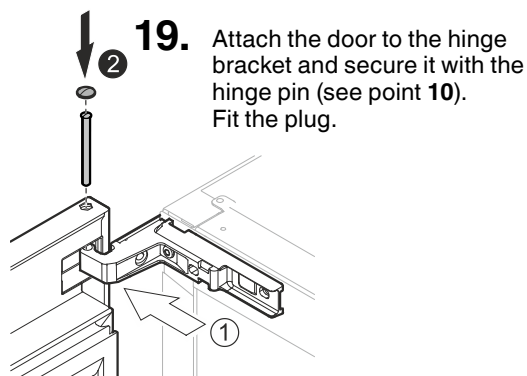
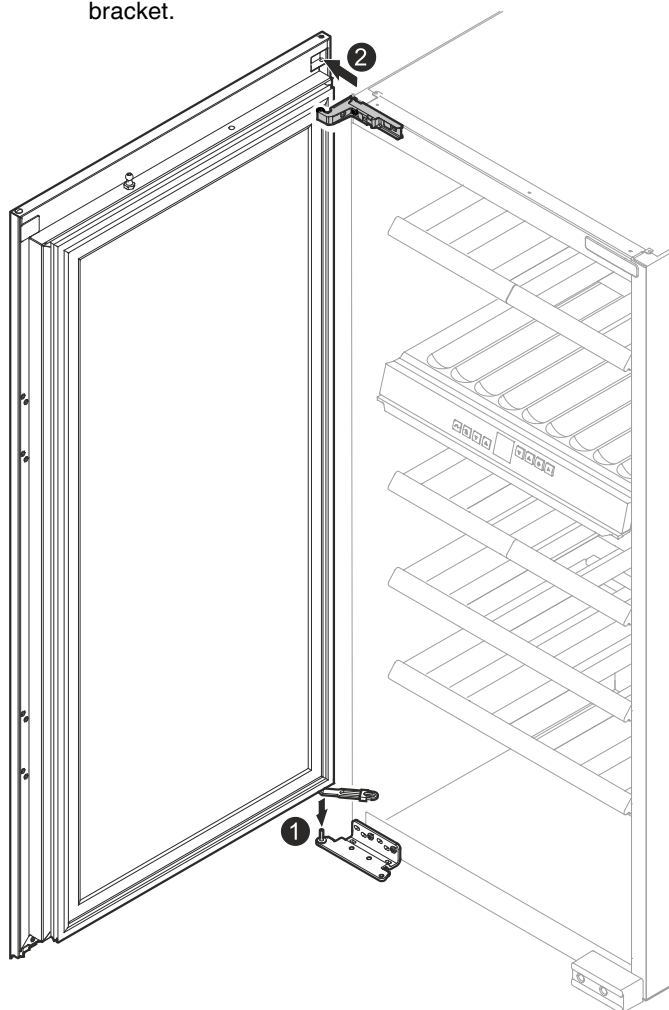


16. Transfer the hinge pin to the opposite side.



17. Fit the transportation safety component and hinge bracket.

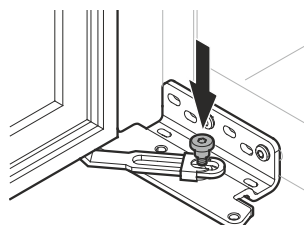
18. Place the door on the hinge pin at the bottom and attach the top of it to the hinge bracket.



19. Attach the door to the hinge bracket and secure it with the hinge pin (see point 10). Fit the plug.

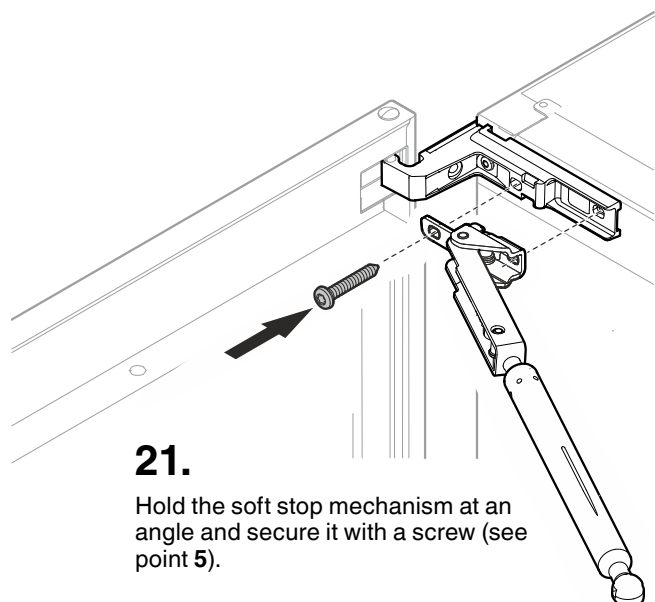
20.

Screw the opening limiter to the bottom hinge bracket (see point 7) in order to secure the door.



Caution

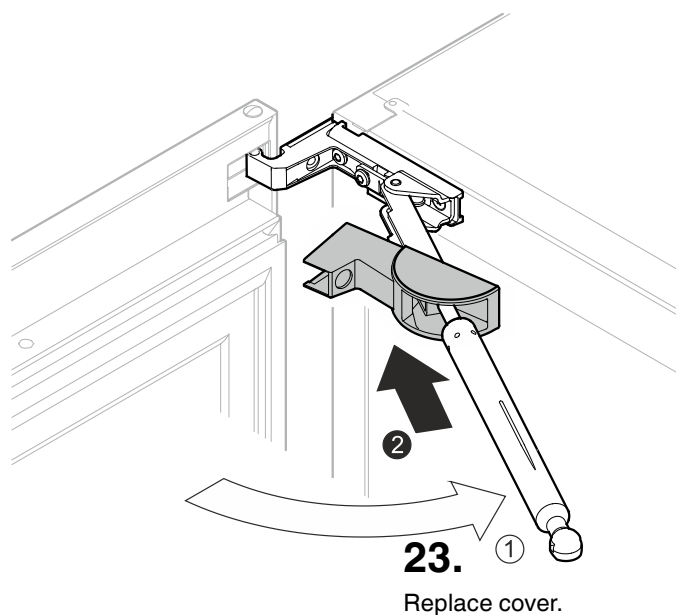
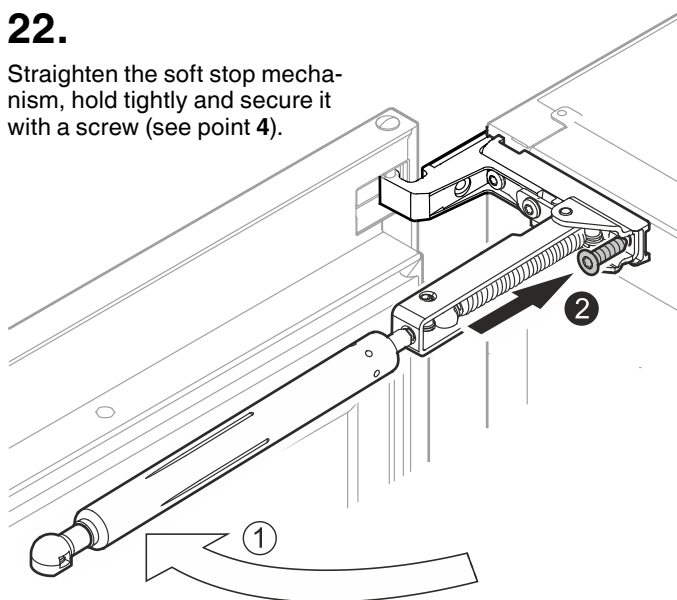
The soft stop mechanism spring is tensioned!

**21.**

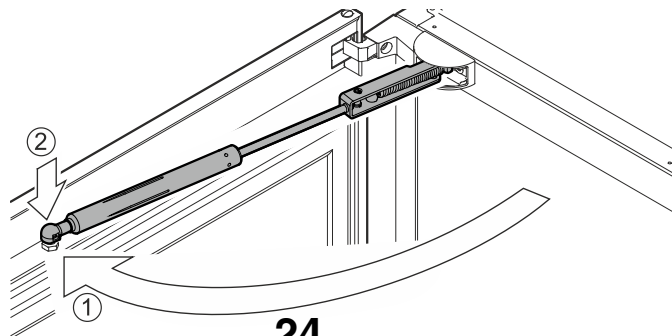
Hold the soft stop mechanism at an angle and secure it with a screw (see point 5).

22.

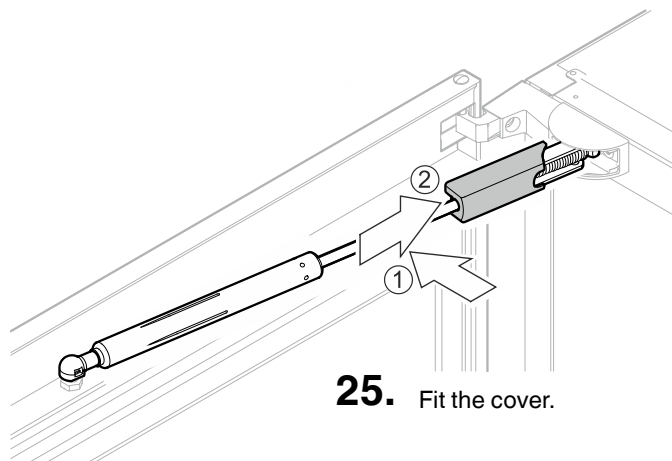
Straighten the soft stop mechanism, hold tightly and secure it with a screw (see point 4).

**23.**

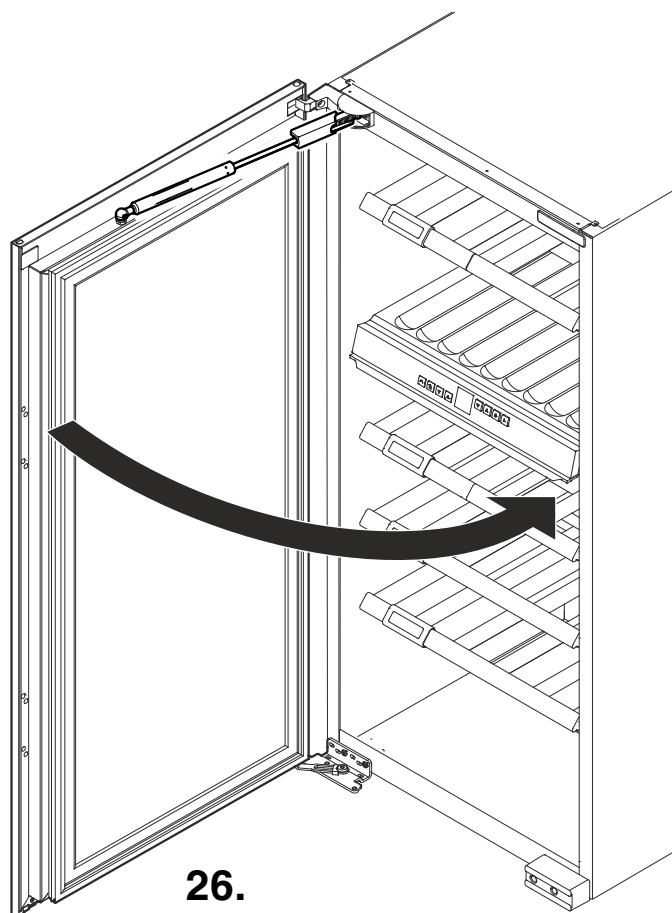
Replace cover.

**24.**

Pivot the soft stop mechanism towards the door and place it on the ball stud.

**25.**

Fit the cover.

**26.**

Check that the door is securely fitted to the appliance and closes properly.

Installing the appliance

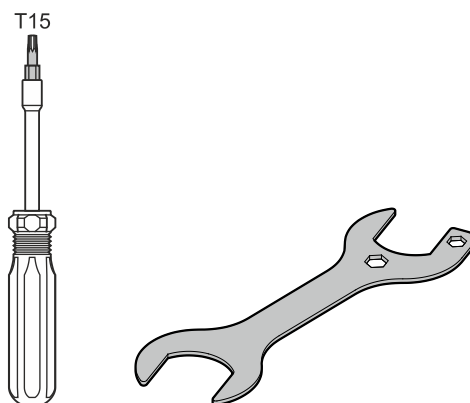
The installation work should only be carried out by trained personnel.

Two people are required for the installation work.

Note

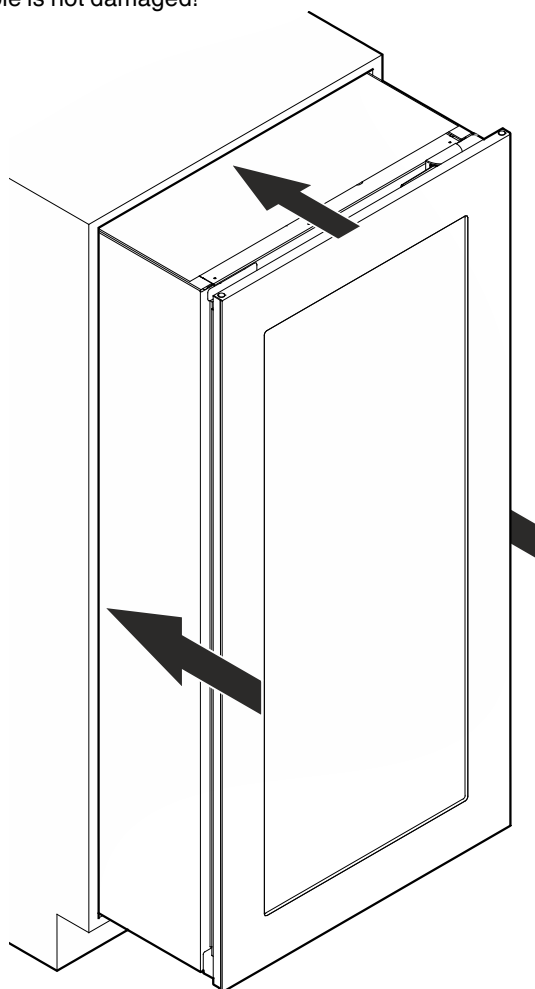
Check the installation dimensions before installation.
The intermediate panel and side wall of the kitchen unit must be perpendicular to each other.

The following tools are required for the installation work:

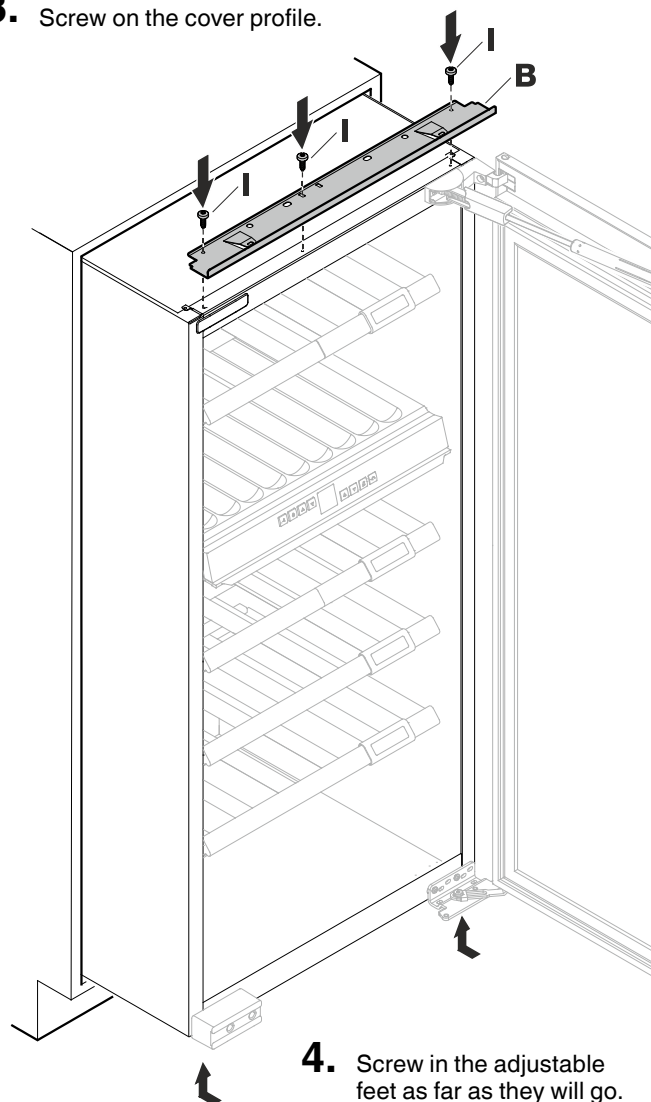


1. Route the mains cable towards the socket.
2. Slide the appliance two-thirds of the way into the kitchen unit.

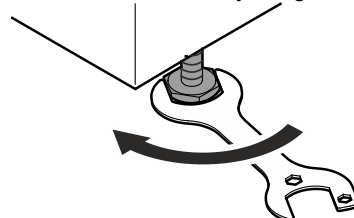
When sliding in the appliance, make sure that the mains cable is not damaged!



3. Screw on the cover profile.

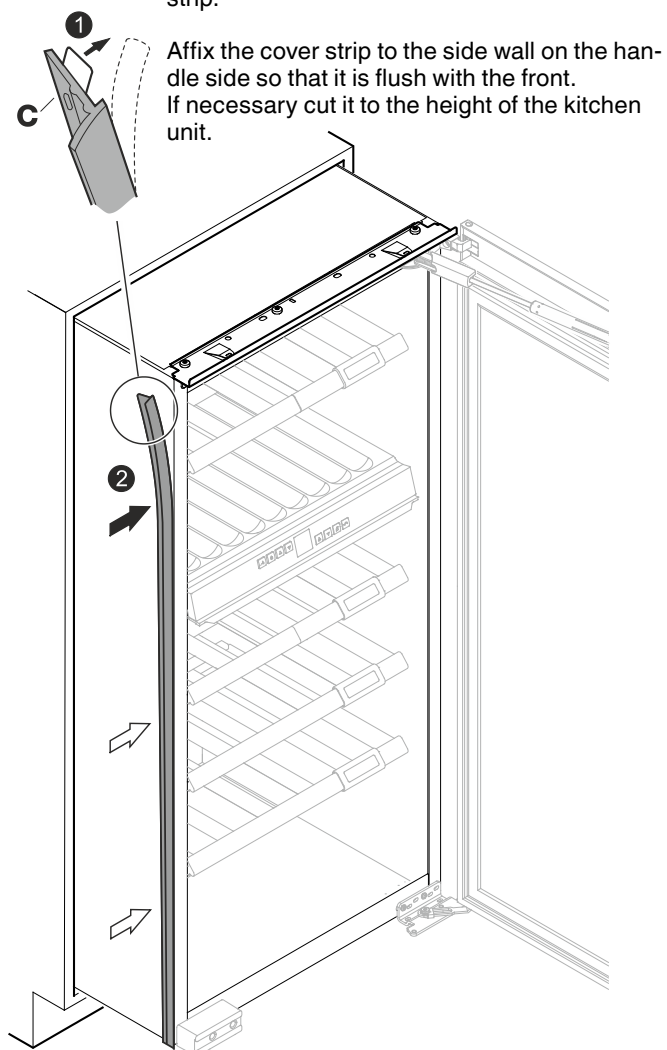


4. Screw in the adjustable feet as far as they will go.

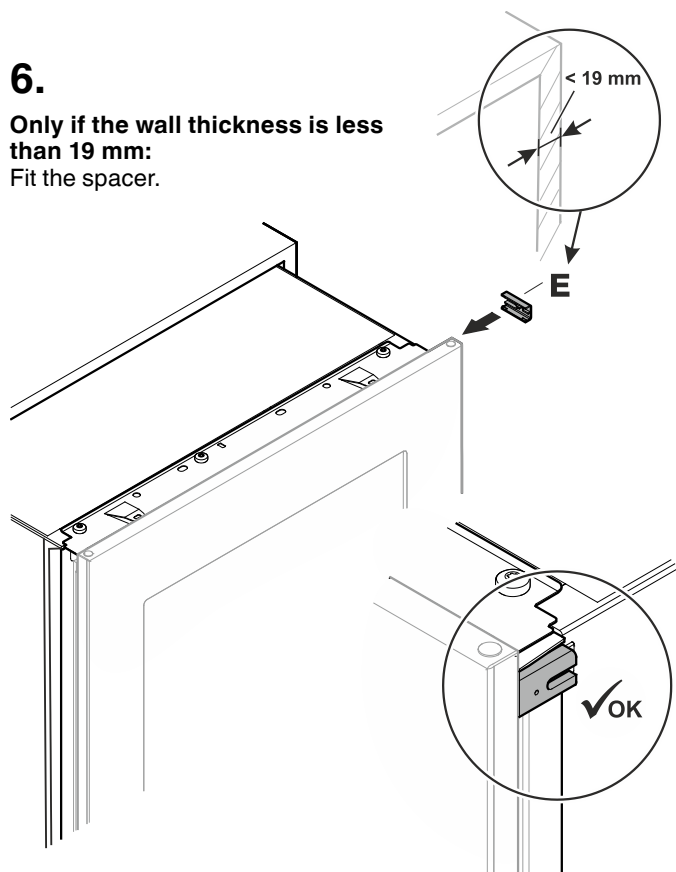


5.

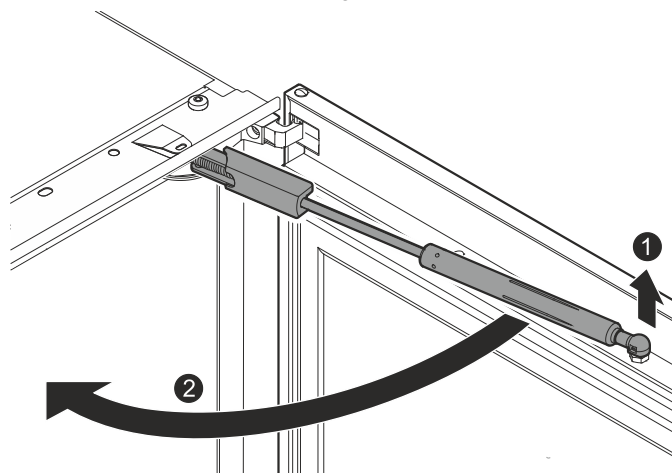
Remove the protective film from the cover strip.

**6.**

Only if the wall thickness is less than 19 mm:
Fit the spacer.

**Caution**

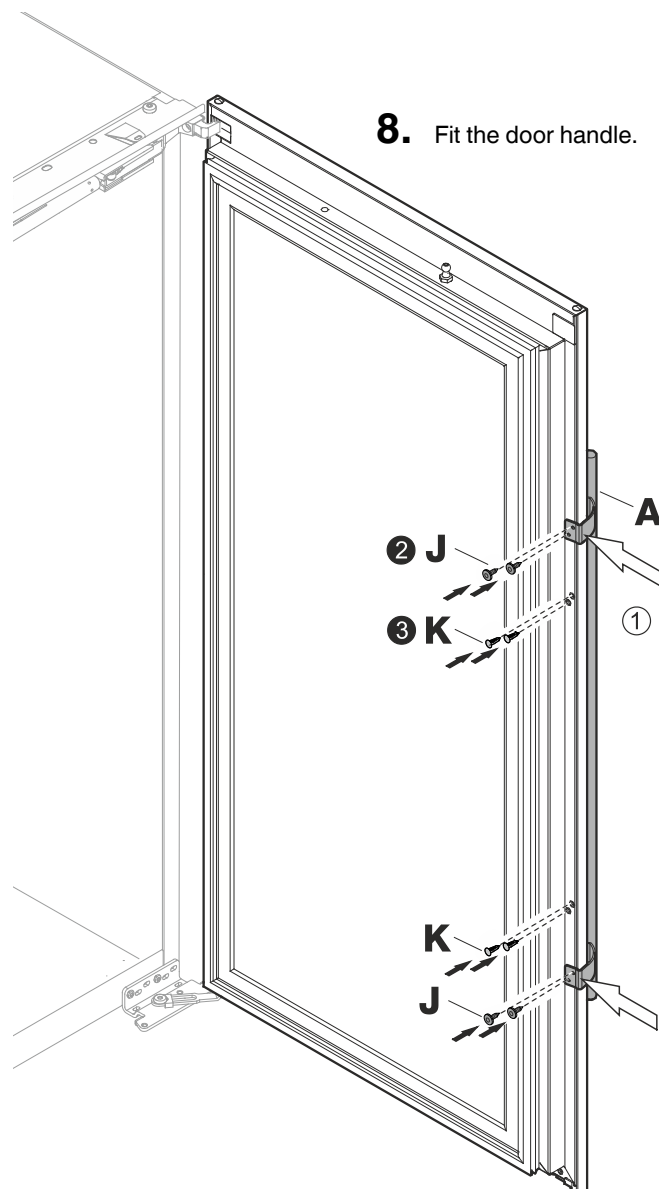
The soft stop mechanism spring is tensioned!

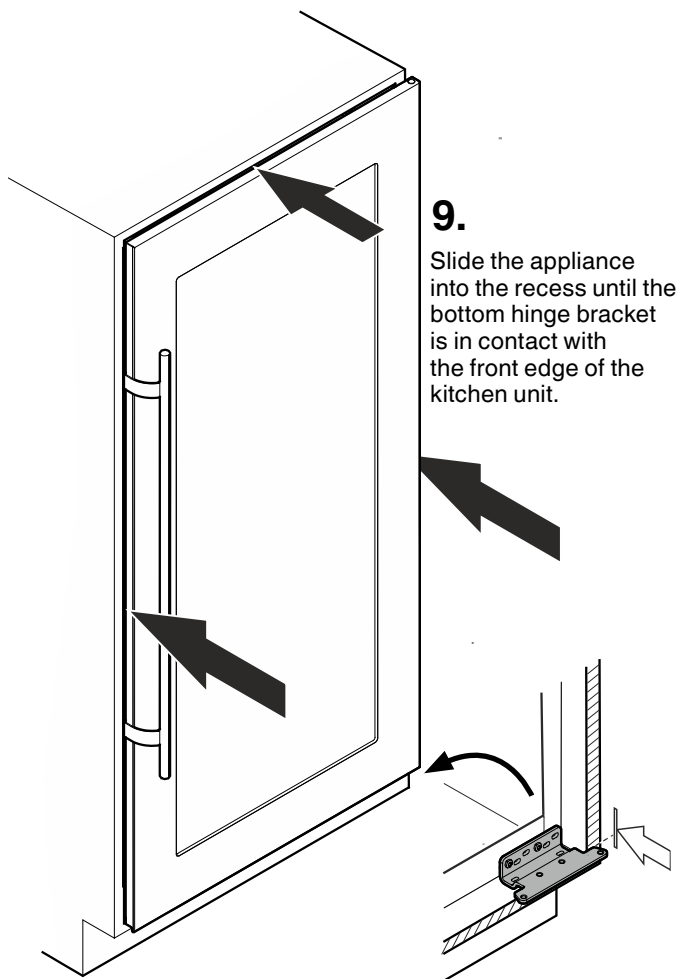
**7.**

Pull the soft stop mechanism off the ball stud, hold it tightly and carefully pivot it towards the appliance.

8.

Fit the door handle.



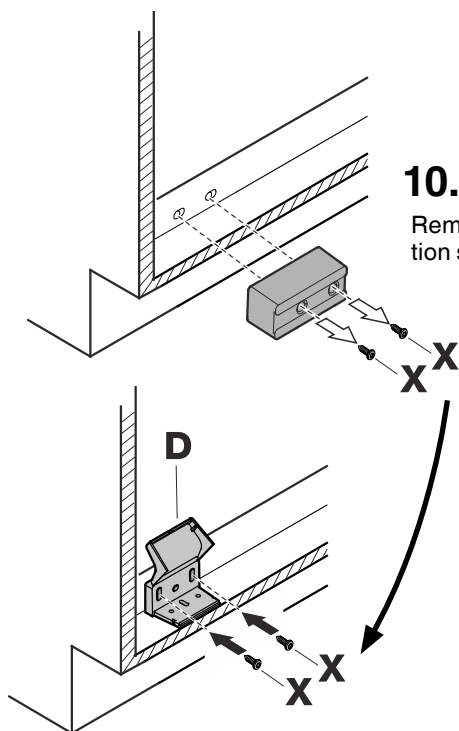


9.

Slide the appliance into the recess until the bottom hinge bracket is in contact with the front edge of the kitchen unit.

Important

If the appliance must be transported again, the transportation safety component must be fitted once again.

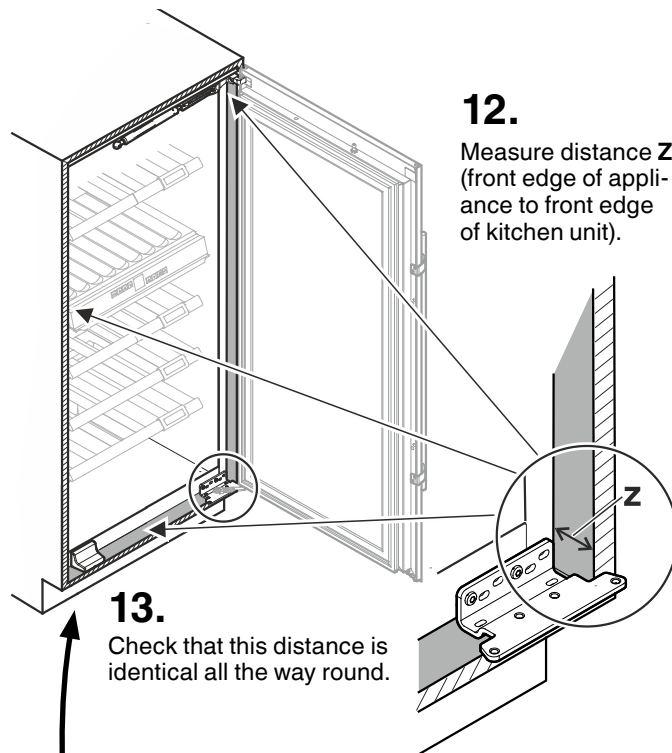
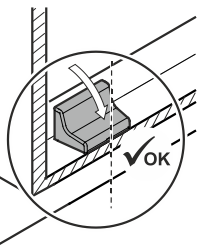


10.

Remove the transportation safety component.

11.

Fit the attachment bracket to the appliance with screws (see point 10) and align it so that it is flush with the front edge of the kitchen unit.



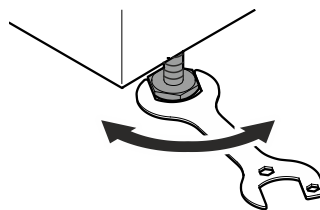
12.

Measure distance Z (front edge of appliance to front edge of kitchen unit).

13.

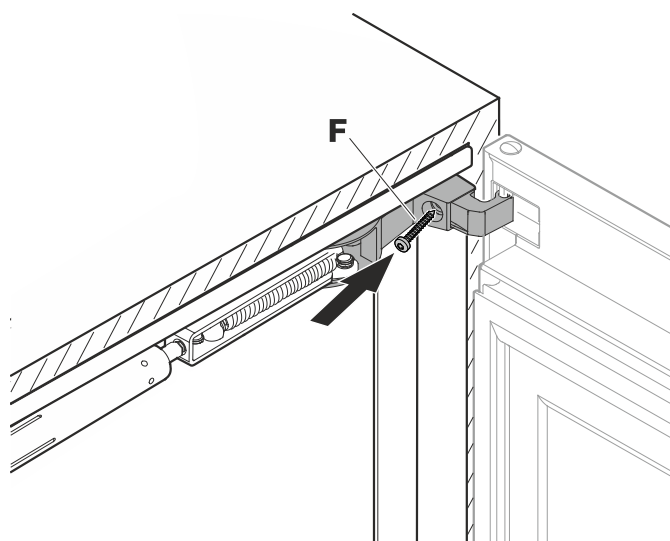
Check that this distance is identical all the way round.

Adjust the feet if necessary to compensate for unevenness.



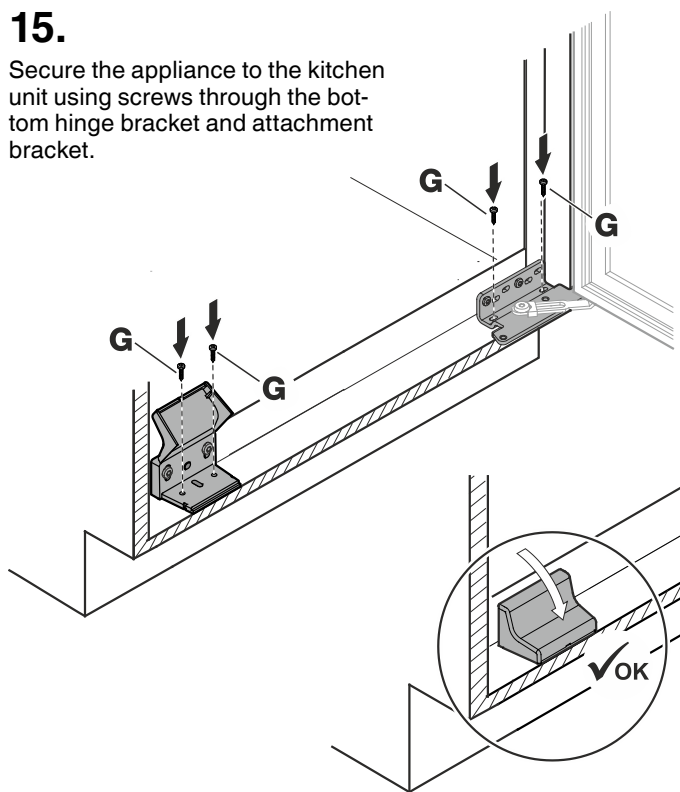
14.

Secure the appliance to the kitchen unit using a screw through the top hinge bracket.

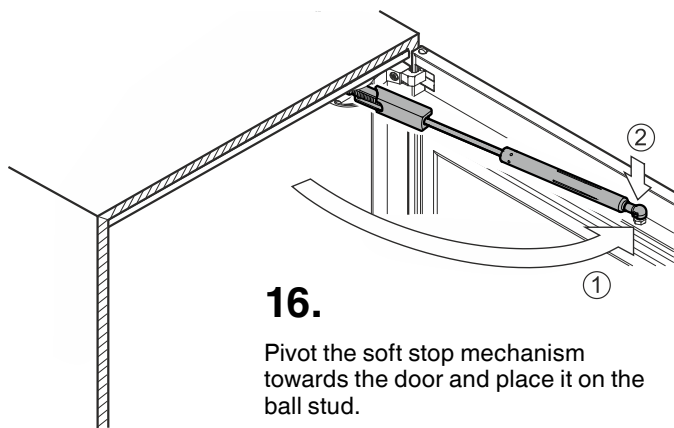


15.

Secure the appliance to the kitchen unit using screws through the bottom hinge bracket and attachment bracket.

**Caution**

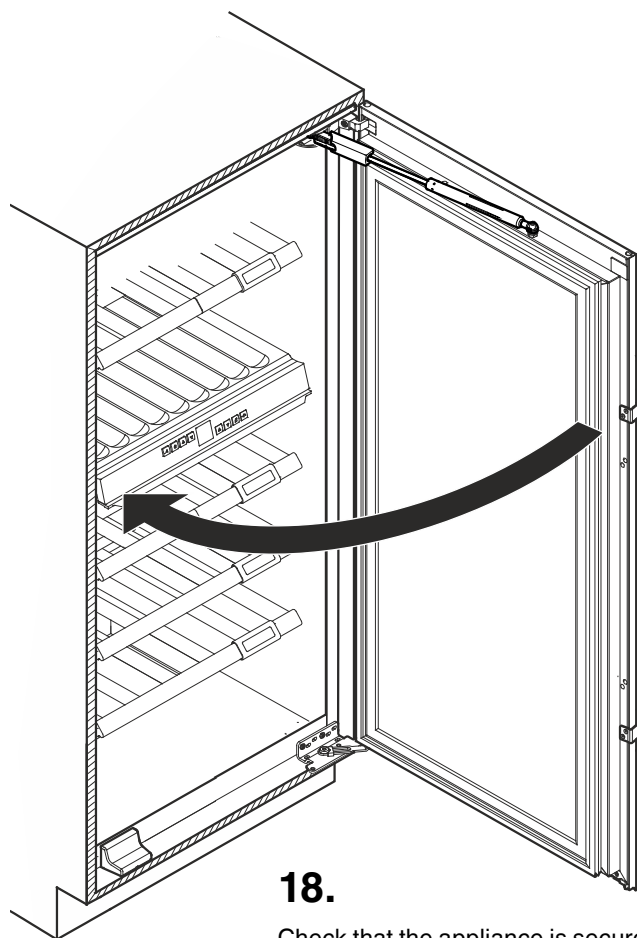
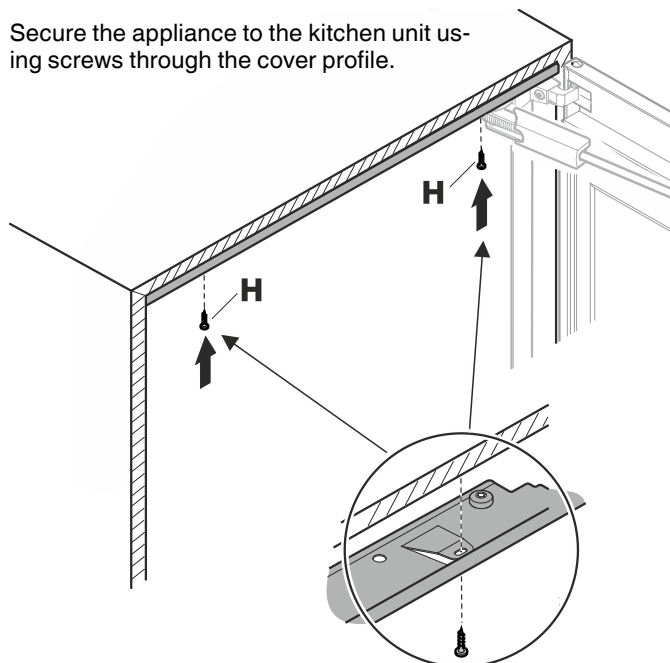
The soft stop mechanism spring is tensioned!

**16.**

Pivot the soft stop mechanism towards the door and place it on the ball stud.

17.

Secure the appliance to the kitchen unit using screws through the cover profile.

**18.**

Check that the appliance is secure in the kitchen unit and that the door closes properly.

Installation is now complete.